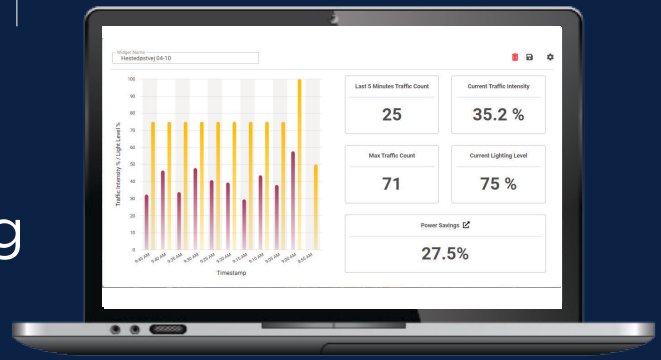


Discover the power of **POWERAID™**



Intelligent Dimming – Live Traffic Data and Events Applied to Lighting Levels for Streetlights.



40%
POWER & CO² SAVING

Integrated with Itron
Enables Intelligent Dimming in SLV (Street Light Vision)



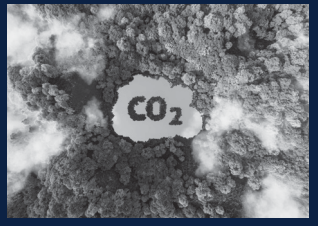
REAL-TIME



SAFE



AUTOMATION



SUSTAINABLE

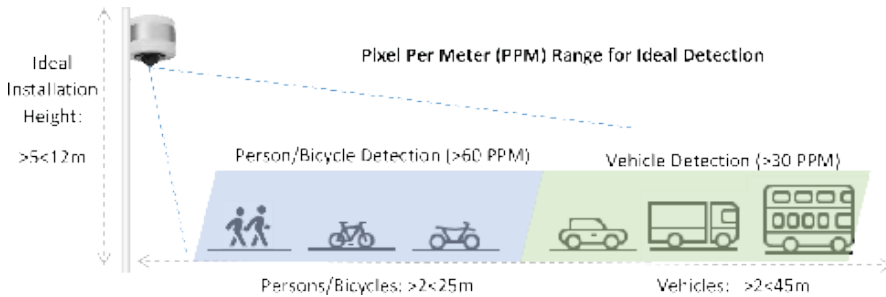
Discover the power of POWERAID™



HARDWARE

TRAFFICAID MULTIMODAL AI SENSOR

- Dual comms: Cellular + Gen™ 5 RF Mesh
- Gen™ 5 Mesh enabled + Direct SLV integration
- Dual-connectivity for real-time optimization
- AC or DC Powered.
- Pole mounted discrete modern Nordic design.
- Hardware included with PowerAID Service Plan
- Additional deployment accessories available



VISUAL SENSOR	IP Camera 3MP 2.8 mm lens IR night mode Fixed focus 25 FPS
DEVICEMANAGEMENT	Itron Gen™ 5 RF mesh
PROCESSOR	Khadas WIM3
CONNECTIVITY OPTIONS	Cellular wireless IoT connectivity included
POWER CONSUMPTION	7-10W
POWER SUPPLY	100-240 VAC
COLOR	White/Grey
BODY PARTS MATERIAL	Aluminium /ASA
ISOLATION CLASS	CLASS II
SURGE PROTECTION	(SetFuse SD10C277LM) Max Surge Current: 15kA – with fault indicator (LED)
INGRESS PROTECTION	IP66
WIND LOAD FACTOR	<0.003m2
IMPACT PROTECTION	IK10
WEIGHT	700g
OPERATING TEMPERATURE	-20°C /+50°C

SOFTWARE

POWERAID INTELLIGENT DIMMING APPLICATION

- Direct SLV integration for intelligent dimming
- Intelligent dimming across global standards
- Ideal for main road traffic safe dimming
- 24/7 real-time multimodal traffic data
- Monthly Subscription Plan
- Balanced cost against power savings
- Seamless additional PowerAID safety and efficiency capabilities

